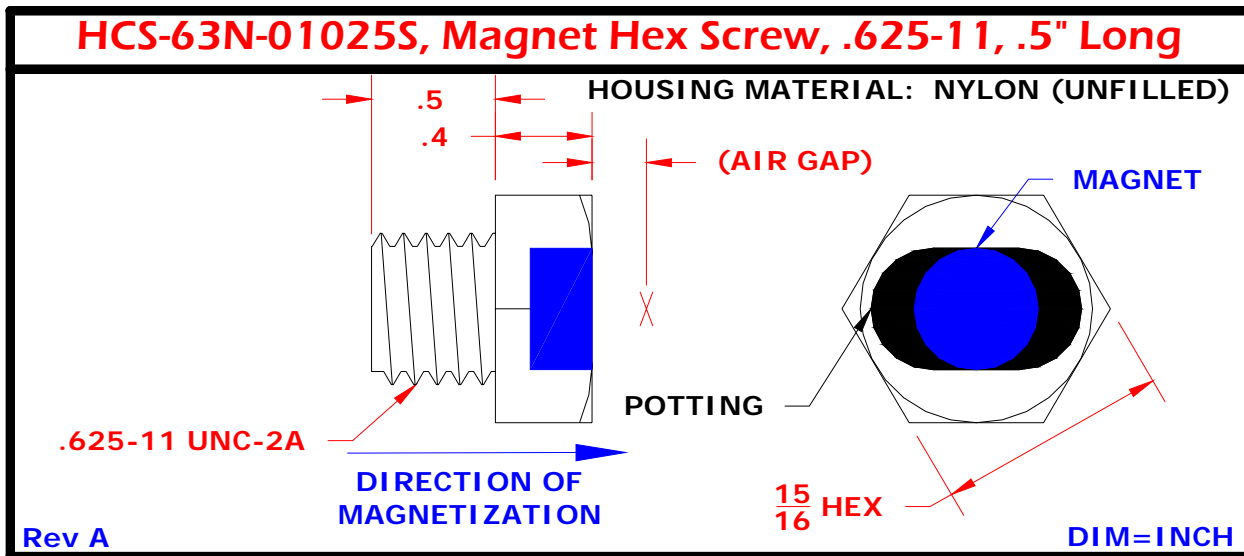


**PM-HCS63N-01025S** Potted Magnet, Hex Cap Screw 5/8-11 by 1.0" long, Nylon with Neo 35 Cylinder .50" diam x .25" long, S Pole Field



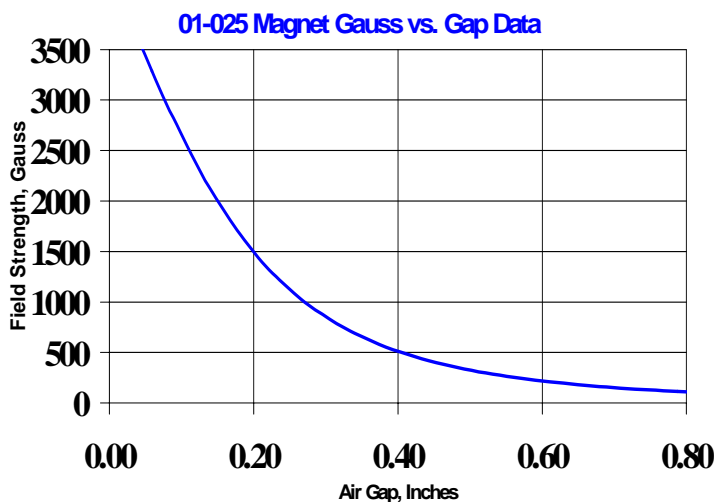
**Magnet Specifications**

300-01-025 NEO35 MATERIAL SPECS(25°C):	TYPICAL:	MINIMUM:
PROCESSING TYPE:	SINTERED	
BR GAUSS:	12000	11700
HC OERSTED:	11500	10800
HCI OERSTED:		14000
BHMAX MGOE:	35	33
BR TEMP CO (%/°C):	-0.12	
RECOIL PERM. (UREC):		
TC CURIE TEMP (°C):	310	
MAX OPERATING TEMP (°C):	90	
Rev B PLATING, NICKEL (MILS):	0.4-0.7	0.4

ENVIRONMENTAL SPECIFICATIONS - HSC63N	
Corrosion Resistance	100 hours salt spray ASTM B-117
Installation Torque	TBD Foot-Pounds Maximum
Enclosure	Nema 1,3,4,6,13 & IEC IP67
Vibration	10 G's 2 to 2000 Hz Sinusodal
Mechanical Shock	50 G's, 11 mS half-sine
Rev A	

PM- is a potted magnet. The part number is PM-HHHH-MMMMMP where HHHH is the Housing code, MMMMM is the part number of the magnet, and P is the Magnet's Pole that exits the housing (S for South pole, N for North).

FIELD STRENGTH CLOSE TO MAGNET



FIELD STRENGTH FAR FROM MAGNET

