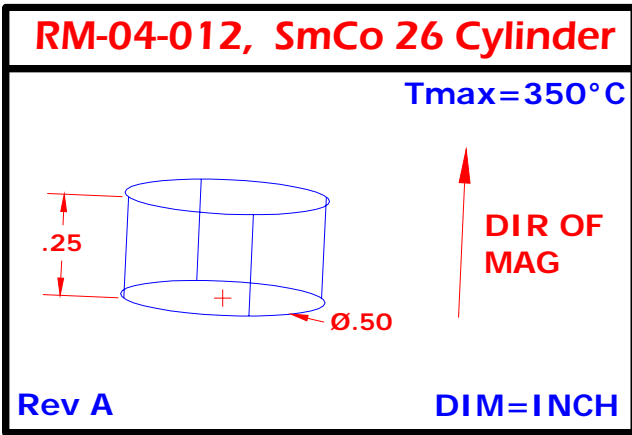


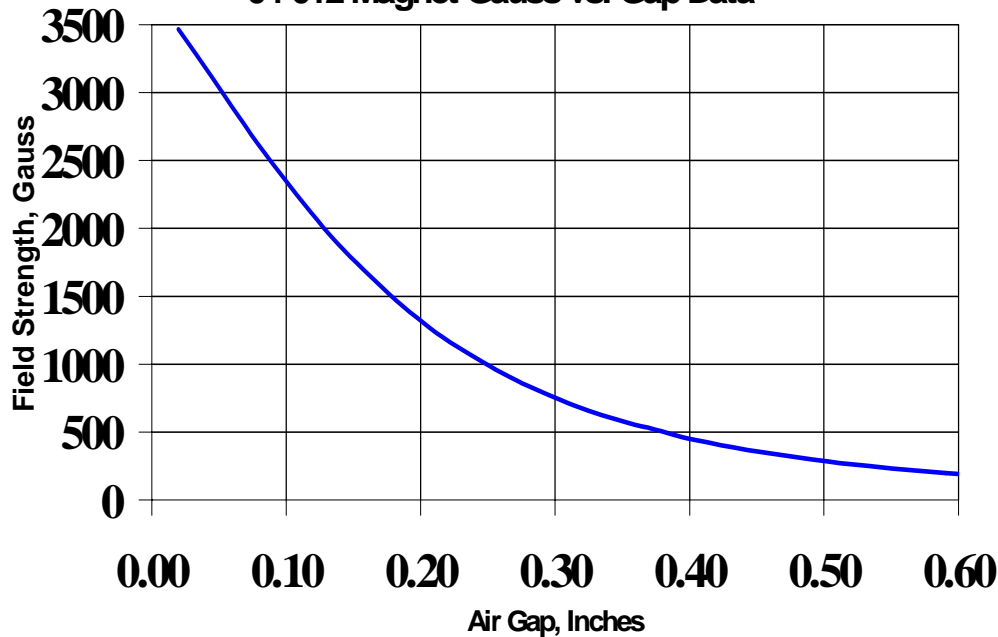
RM-04-012 Magnet, SmCo 26 MGOe, Cyl, .50 diam x .25 long, S-Pole Marked



300-04-012 SMCO 26 MATERIAL SPECS(25°C):	TYPICAL:	MINIMUM:
PROCESSING TYPE:	SINTERED	
BR GAUSS:	10600	10200
HC OERSTED:	10100	9100
HCI OERSTED:	20000	18000
BHMAX MGOE:	26	24
BR TEMP CO (%/°C):	-0.03	
RECOIL PERM. (UREC):		
TC CURIE TEMP (°C):	800	
MAX OPERATING TEMP (°C):	350	
Rev A PLATING:	NONE	NONE

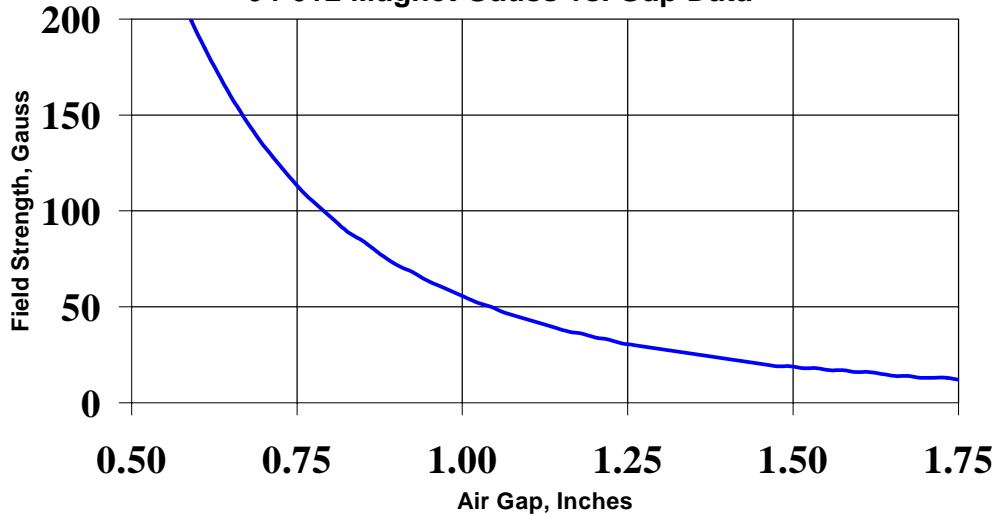
Samarium Cobalt magnets are brittle. Dropping these magnets or allowing them to contact with excessive force will result in the magnet(s) cracking and/or shattering.

04-012 Magnet Gauss vs. Gap Data



Close Gap Data

04-012 Magnet Gauss vs. Gap Data



Far Gap Data