

Speed Switches:

These meters are programmed to receive digital sensor pulsing inputs and open or close a relay when the pulse rate is above or below a specified speed. These devices are available in DIN Rail mounted enclosures, sealed wall mount enclosures, or provided as part of a digital speed display. Sensors with built in speed switching outputs are also available. [Contact us](#) if you have requirements not shown below. The links below will take you direct to the product page for each option. When ordering a speed switch, Sensor Solutions will provide a 1 page program setup form. Once completed, this information is maintained in our system for future orders. Sensors are available with numerous cable length options for connecting the sensor direct to the meter.

Din Rail Mount:

[DR-SS-vvTBC](#) – Din Rail Mount, AC and DC powered options, terminal block connections.

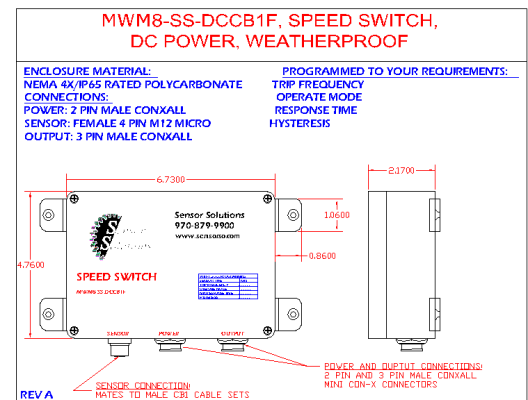
**Sealed Enclosure:**

[MWM8-SS-DCCB1F](#) – Weatherproof wall mount enclosure, DC powered, M12 sensor connector, mating connectors included for power and output.

Also available:

- AC powered
- Numerous Connector options.

Contact us to discuss your specific requirements.

**Tachometer with Single Setpoint Relay:**

[FM-TACH-ACRTBC](#) - AC powered, provides DC power for the sensor, Single Setpoint Form C relay

[FM-TACH-DCRTBC](#) - DC powered, Single Setpoint Form C relay

Tachometer with Dual Setpoint Relay:

[FM-TACH-AC2SPRTBC](#) - AC powered, Dual Set Points with Non-isolated switched DC, N Channel open drain MOFFSET outputs

[FM-TACH-DC2SPRTBC](#) - DC powered, Dual Set Points with Non-isolated switched DC, N Channel open drain MOFFSET outputs

Speed Switching Sensors:

[Speed Switching Sensors \(Sensor Selection Wizard\)](#) – The link to the left will take you to step 2 of our 5 step Sensor Selection Wizard. In this wizard you can build the speed switching sensor that best meets your needs based on the type of target being detected and the output type required.

Target Detection Options:

- Gears
- Bolt Heads or other ferrous protrusions
- Holes in Ferrous Targets
- Permanent Magnets