

FM-TACH-DC2SPRTBC - Digital Dual Output Tachometer, Face Mount, DC Powered, terminal block connections, dual sinking open collector outputs

FM-TACH-DC2SPRTBC, DIGITAL TACHOMETER, PANEL MOUNT TERMINAL BLOCK CONNECTIONS, DC POWER DUAL SINKING OPEN COLLECTOR OUTPUTS

EXPOSED MATERIAL:
NEMA 4X SEALED
FRONT BEZEL

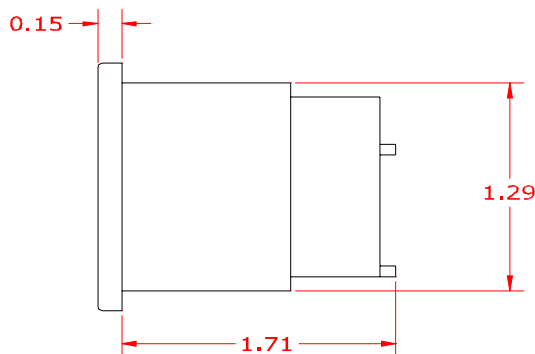
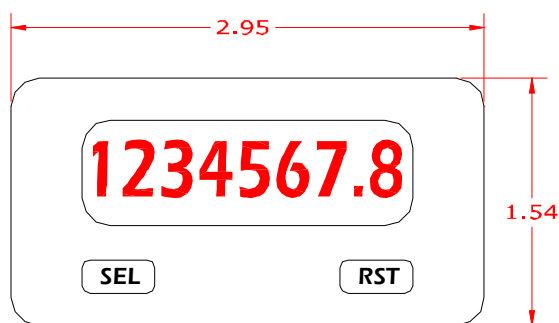
PROGRAMMING:
SHIPPED PROGRAMMED
TO YOUR NEEDS

CONNECTIONS
WIRE CLAMPING SCREW
TERMINALS (30-14AWG)

DISPLAY:
8 DIGIT, 0.46" LCD

OTHER OPTIONS AVAILABLE
*CONTACT US FOR QUOTE
-AC POWERED VERSION
-DUAL COUNT/QUADRATURE
-MOUNTED IN WEATHERPROOF
ENCLOSURE WITH SEALED
CONNECTIONS

RECOMMENDED MINIMUM CLEARANCE (BEHIND PANEL) IS 2.15" Hx 3.00" W
RECOMMENDED MINIMUM PANEL CUTOUT DIMENSIONS: 1.3" H x 2.68" W



REV A

DIM = INCHES

FM-TACH-DC2SPRTBC POWER AND SENSOR WIRING

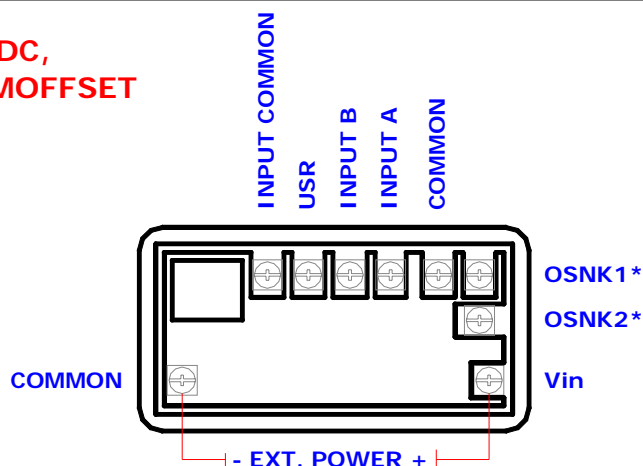
DC POWER: +9 - +28 VDC

*OUTPUTS: Non-isolated switched DC,
N Channel open drain MOFFSET

SENSOR WIRING:
CURRENT SINKING/SOURCING

Vout **INPUT A**
Gnd **COMMON**
Vcc **Vin**

2 WIRE MAGNETIC PICKUP
Output+ **INPUT A**
Output- **COMMON**



Rev A

FM-TACH-DC2SPRTBC - Digital Dual Output Tachometer, Face Mount, DC Powered, terminal block connections, dual sinking open collector outputs

TACH-DC2SPR, Electrical & Functional Specifications

ABSOLUTE MAX LIMITS	CONDITIONS	MAX	UNITS
Power	Input Voltage	+9 to +28	Volts DC
Maximum Frequency	Operating	20	KHz
Minimum Frequency	Operating	0.01 (min)	Hz

ELECTRICAL SPECS	CONDITIONS	MIN	MAX	UNITS
Temperature Range	Operating	-35	+75	Deg C
Temperature Range	Storage/No Power	-35	+85	Deg C
Humidity	Operating/Storage	0	85	% RH
Vibration (x,y,z) direction	IEC 68-2-6	-----	500	Hz
Shock (x,y,z) direction	IEC 68-2-27	-----	40	g
Output Current Rating	Operating	-----	0.1	Amp
Output Vds On	100mA	-----	0.7	Volts DC
Output Vds Max	Operating	-----	30	Volts DC
Output Offstate Leakage	Operating	-----	0.5	mA

PROGRAMMED PARAMETERS	MIN	MAX	PROGRAMMING	UNITS
Rate: Unit of Measurement				
Rate: Scaling Display Value	0	999999		
Rate: Scaling Input Value	0.1	99999.9		
Rate: Low Update Time	0.1	99.9		sec
Rate: High Update Time (zero)	0.2	99.9		sec
Setpoint 1	0.0	999999		Hz
Setpoint 2	0.0	999999		Hz
Setpoint Actions:				
PROGRAMMED TO:	900-14-____			

Rev A

CAUTION: Power common (PWR COMMON) is NOT isolated from input common (INP COMM). In order to preserve the safety of the meter application, the power common must be suitably isolated from hazardous live earth referenced voltage; or input common must be at protective earth ground potential. If not, hazardous voltage may be present at the Signal or User Inputs and input common terminals. Appropriate considerations must then be given to the potential of the input common with respect to earth ground; and the common of the plug-in cards with respect to input common.

CHANGING THE SENSOR OR TARGET: This unit is provided programmed to the specific application requirements as stated by the customer or calculated by Sensor Solutions. Changing the sensor may require changing dip switches located within the meter. Always contact Sensor Solutions before changing the sensor, the target, or the unit programming.

REPROGRAMMING THE METER: Attempting to reprogram the unit without contacting Sensor Solutions may invalidate the warranty. Contact Sensor Solutions to discuss reprogramming options.

REPLACEMENTS, ADDITIONAL UNITS, NEW APPLICATIONS: To order a new meter with the same programming, indicate the 900-14-xxx number listed in the specifications above. If you require different programming or are using different sensors and/or targets contact Sensor Solutions for a new Programming setup form or to discuss the new application.